



# Rector

## The Benefice of North West Hampshire

In the deanery of Whitchurch



# INDEX

Page	Title
3-4	Welcome
5	Introduction
6	Our Vision
7	Our Church Life
8-9	Our Team
10	Our Organisation
11	The House
12-13	Role Description
14	Appendix Our churches Current monthly service pattern Benefice map



## WELCOME TO WINCHESTER DIOCESE

Thank you for your interest in coming to minister here in this Diocese.

We serve a whole range of diverse communities, from the historic city of Winchester with our glorious Cathedral to the great port city of Southampton, the burgeoning boroughs of Basingstoke, Bournemouth and Christchurch, thriving market towns such as Andover, Alton, Alresford and Romsey, and innumerable picture-perfect Hampshire villages. In all that there is much wealth – but there is also significant deprivation too, especially in our large urban conurbations where our churches are supporting some of the diocese's poorest communities.

In every context, we are committed to the making the love and life of Jesus Christ known, through our churches, schools and chaplaincies, in a way that makes a tangible difference to those communities and their people.

In many ways the Diocese of Winchester is in transition, as is the world around us. In parish ministry we seek people who are aware of the challenges that we face, but who are motivated above all by faith, hope and love in addressing them. We welcome those who are committed to help God's church to be the very best it can be, in the power of the Spirit, releasing all God's people into the mission and ministry to which they are called. And we recognise too our need to develop in diversity.

We are excited by the opportunities before us, and warmly invite applications from those who want to join us in addressing them.

With the assurance of my prayers as you seek God's best next step for you,



## WHITCHURCH DEANERY

**Whitchurch Deanery** is as beautiful as any other part of Hampshire, an area of rolling downland in the north together with the upper Test valley, bounded by the Berkshire border and the A303. Our 25 churches serve a population of some 25,000 many of whom take advantage of our excellent transport links to work in London or the large towns that surround us. As a deanery we seek to enable our seven benefices to respond to the diocesan vision, and in particular we are developing our capacity to support each other and to engage with new forms of ministry. Our clergy chapter offers encouragement to its members and the space for reflection on our shared ministry. A notable feature of the deanery is the dynamism and warmth of our links with the diocese of Mityana in Uganda and many visits in each direction have been undertaken over recent years.



The Revd David Roche  
Area Dean and Priest in Charge  
Whitchurch.



# INTRODUCTION

Thank you for your interest in the post of Rector for the North West Hampshire Benefice.

We are seeking an energetic and enthusiastic priest who will work collaboratively with the Associate Priest (House for Duty), the churchwardens and Licensed Lay Ministers. He or she will live in the Parish of Woolton Hill, and is assured of a warm welcome across the whole Benefice. We pray that they will bring a deep and confident faith, and their own distinctive skills and experience to join us in making Christ known in our communities.

The area is essentially rural with traditional English villages and hamlets. We enjoy stunningly beautiful countryside as well as a unique location at the crossroads of the south of England: from here there is easy access to the busy town of Newbury, and excellent road and rail links in all directions north, south, east and west. We are well served by schools: with a C of E VA Primary School in East Woodhay, a C of E VC Infant School and a County Junior School in Woolton Hill, an independent preparatory school in Highclere and secondary schools in neighbouring Burghclere and Newbury.

Our parishes are lively communities with a great mix of people; our combined population is about 5,000. Our churches seek to be at the heart of local parish life, with active communities of volunteers. Together we have financial stability, and we find strength in shared ministry and support in our mission to make Christ known. Each parish is also proud of, and inspired by, its own distinctive Christian heritage and tradition. Please read more about each parish in the Appendix.



*Churchwardens (clockwise from top left): Richard Twallin, Andrew Colville (East Woodhay), Alan Rowe (Ashmansworth), Bridget Wheeler, Christine Vane (Woolton Hill), David Wolfenden (Crux Easton), Jo Walsh, Carole Grover (Highclere)*

Please read on to find out further information about our parishes and current priorities in ministry and mission, along with the role description for the post of Rector. For more information or an informal discussion about this vacancy please contact:

**Richard Twallin**, Churchwarden, St Martin's Church  
**phone: 07850 760967**  
**e-mail: [rtwallin@compuserve.com](mailto:rtwallin@compuserve.com)**



## OUR VISION... *making Christ known in our communities*

We are five socially and economically diverse parishes which were joined together as a Benefice in 2009. Our current patterns of ministry and worship aim to promote, sustain and further the mission of each church in our parishes. We want each parish church to serve their community, sharing the love of Christ and the good news of hope which He gives. We celebrate and embrace each parish's unique character and tradition, while supporting each other by affirming our common faith and mission to make Christ known in our communities.

We are focusing particularly on the following:

### **United Benefice Worship and Discipleship**

There are many worship initiatives throughout the Benefice including home and prayer groups. There are regular Benefice services when our congregations come together. We aim to use both initiatives to grow our Christian presence and increase our engagement with a geographically dispersed community, sharing our knowledge of Christ and seeing people saved.

We aim to expand our ministry team with more Licensed Lay Ministers and Bishop's Commission for Mission (BCM) qualified leaders.

### **Reaching new generations**

We want to grow our activities for children, from the foundations described in the next section. We plan to strengthen further our links with local schools in new and engaging ways alongside church services and in-school worship. We need to find ways of retaining our links with children when they move from our primary schools to secondary schools.

### **Engaging with faith and action in matters of social and community concern**

We wish to maintain our connections with those in the local care homes, further develop the [Community Café](#), continue our support of Newbury-based social work including [Loose Ends](#) and the local [Food Bank](#). All our churches are committed to environmental management and the C of E's net zero carbon [Route-map](#).

### **Administration and Communications**

Communication is critical to delivering our mission. Our two monthly parish magazines are fundamental, as are the delivery of Christmas and Easter leaflets to all houses in the Benefice. We need to improve our online presence, which currently comprises Facebook pages for the [Benefice](#), [Sunday Club](#), [St Martin's Church](#), a St Martin's [website](#) and pages on '[a church near you](#)'.

The amalgamation of our PCCs and the extension of the Benefice Coordinator's role is expected to reduce the Rector's (and others') administrative workload, freeing up time to deliver and realise our mission.



## OUR CHURCH LIFE

Our parishes are lively and vibrant communities with a great mix of people of all ages and backgrounds. Details of each of our five churches can be found in the Appendix. We believe it is an essential part of each church's life and mission to be welcoming, open and inclusive in serving the parish to which it belongs. Baptisms, weddings and funerals continue to be an important and valued aspect of each church's outward facing pastoral ministry.

Each church is proud of, and inspired by, its own distinctive Christian heritage and tradition. In leading services our clergy and LLM normally wear robes; also two churches have vestments. We value music in worship; three churches have robed choirs and a combined benefice choir sings for special services. There has been a worship band, also a music group, in the past and we would like to see something similar developed for relevant services in the future. We value the liturgy of both the Book of Common Prayer and Common Worship, as detailed in the 'Monthly Pattern of Services' in the Appendix. We want to grow our worship and activities for families and children, building on a well-established 'All Together' and associated [Sunday Club](#) in St Thomas', Woolton Hill and the work St James', Ashmansworth has done in offering activities for families inspired by [Messy Church](#). Through the year Benefice services bring us together: notably on Palm Sunday, fifth Sundays (in the month) and during August. There is interest in developing more informal worship. Discipleship, study and home groups are arranged as cross-benefice initiatives.

We have good relationships with our local schools. Recently St Thomas CE VC Infant School and Woolton Hill Junior School became a Federation, '[The Schools of Woolton Hill](#)'. There continue to be opportunities to grow our relationship with the Federation and our already vibrant link with [St Martin's CE VA School](#) in East Woodhay. Ministry to our schools is an essential and growing aspect.

We have committed and experienced churchwardens, PCC officers and members, and financial stability which gives us flexibility as we discern the furthering of our mission. As parishes working together since the Benefice was formed, trust and relationship between us has grown.

Our wider communities gather with great energy to support fêtes, fund-raising and special occasions such as the 2023 Coronation celebrations.

Further details are in the Appendix.

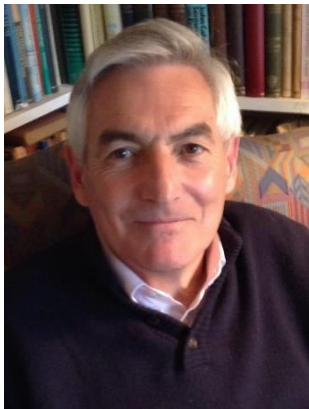


## OUR TEAM

The Rector leads the Ministry Team which resources and enables worship and ministry across the whole benefice. The current team comprises the Associate Priest, two Licensed Lay Ministers, augmented by eight experienced Churchwardens, several of whom have read services during the interregnum and when ministers have been unavailable.

The team comprises:

### ASSOCIATE PRIEST: THE REVD CHRISTOPHER HANCOCK



Chris and Suzie Hancock moved to join us in March 2023. Chris continues to work full-time, but helps on a part-time 'House for Duty' basis in the Benefice. Teaching, evangelism, and work among students and young people, have been central to Chris and Suzie's ministry inside and outside the church over the years. Chris was Vicar of Holy Trinity Church, Cambridge, the historic mother church of Anglican evangelicalism, from 1994-2002. Since stepping down as Dean of Bradford Cathedral in 2004, the focus of Chris' ministry has been teaching internationally and supporting the ministry and development of orthodox Christian leaders in the developing world. In addition to various academic positions world-wide, Chris is 'Scholar in Residence' at St Andrew's Church, Mount Pleasant, the largest church in the Anglican Church in North America.

The Hancocks have two children and four grandchildren.

**SUKI COE** was licensed as a Lay Minister in 2022. She has lived in the Penwood area of Highclere since 2004 and is married to Duncan; they have a grown-up daughter.

She says: *'I work part-time for a civil engineering company securing planning permission for large scale infrastructure projects. I am heavily involved in working with St Martin's School and developing All Age worship in the benefice. Outside of work and worship I enjoy cycling and walking my dog Ruudi'*

**ROSEMARY CAHILL** has been a Licensed Lay Minister for more than 20 years and her vocation was nurtured in the parishes of Woolton Hill and East Woodhay. She is now officially Reader Emeritus although still contributes much through a ministry to the local care homes, which includes Home Communion if required, in collaboration with a priest. She says: *'I still play tennis, garden, volunteer at the local surgery and have a ministry of the 'twiddly bits!'*



*Benefice Prayer*  
*Eternal Father,*  
*we give thanks for calling us*  
*to be fellow-pilgrims in Christ.*  
*Strengthen our faith,*  
*renew our common life*  
*and guide us into the future*  
*in the power of your Spirit.*  
*With your grace*  
*may we be faithful witnesses,*  
*in both word and deed,*  
*to your love and saving presence*  
*in all our communities.*  
*Through Jesus Christ our Lord.*  
*Amen.*



**SUE HOPKINSON** is our Benefice Coordinator, shortly to hand over to her successor (see 'Our Organisation' section). Sue supports with general administration working a few hours a week from home and sometimes at The Rectory. Sue also works in the school office at St Martin's Church School in East Woodhay.

**BERTHA BATES** supports wedding and funeral administration and assists the Ministry Team with the production of a weekly notice sheet, service sheets... and coffee! Bertha enjoys singing and co-ordinates the choir at St Thomas', Woolton Hill.

... and there are many more who are an essential part of the extended ministry of all our parishes, including:

- committed and hardworking churchwardens, treasurers, secretaries and PCC members
- regular organists at East Woodhay and Highclere, and, at our other churches, the support of a number of organists and other musicians who live locally
- church choirs at East Woodhay, Highclere and Woolton Hill
- bellringers at East Woodhay, Highclere and Woolton Hill
- a number of people confident to assist in services and to lead children and young people
- dedicated teams of flower arrangers at each church
- faithful groups of volunteers doing most of the practical jobs and caring for the buildings and churchyards.



# OUR ORGANISATION

## Governance

At present, each of our five parishes is currently governed by its own PCC. All PCCs continue to meet during the interregnum period.

Following extensive work over the past two years we plan to combine four of the PCCs into one - the objective being to simplify and strengthen central governance structures, facilitate compliance and, most importantly, release energy locally for ministry and mission. Highclere PCC have decided, for the time being, to remain independent. The Pastoral Scheme, to combine the PCCs of Ashmansworth, Crux Easton, East Woodhay and Woolton Hill is currently being processed by the Diocese.

It is likely that detailed decision-making will take place through the work of devolved committees for each church. Strengthening central administration, communications and online presence are also a key part of this emerging plan. Under the proposed scheme, the Rector will chair the two PCCs, rather than five, thereby reducing the administrative workload; and churchwardens will chair the Local Church Committees who will retain local responsibility for safeguarding in particular.

## Administrative support

We have recently appointed a Benefice Coordinator who will take over the work currently undertaken by the two existing team members (who both plan to retire from church administrative work after many years' service). The Coordinator will also provide support to the new combined PCC.

## Finances

The policy of all the churches in the Benefice is that finance needs to support our mission and vision. We decide first what we need to do, then plan the required funding and how to generate those funds. Our policy is to pay Common Mission Fund contributions in full and on time.

Receipts and payments for each church are summarised below.

Parish	2023 (provisional)		2022		Comments
	Receipts	Payments	Receipts	Payments	
Ashmansworth	£24.2k	£23.6k	£23.0k	£38.5k	Major building works in 2022
Crux Easton	£5.0k	£2.7k	£3.4k	£1.9k	
East Woodhay	£63.2k	£59.8k	£70.9k	£70.3k	Significant repair works in 2022
Highclere	£68.8k	£66.4k	£67.6k	£65.4k	
Woolton Hill	£66k	£63k	£81.4k	£89.5k	Includes church hall finance: major works in 2022



## THE HOUSE

The Rectory is an attractive and comfortable detached property in Mount Road, Woolton Hill, within walking distance of local schools, shop and post office. It includes a front and back garden.

The house's features comprise:

- generous entrance hall, leading to a dining room at the front of the house, with a sitting room overlooking the rear garden.
- large kitchen diner that leads to a utility room and a small cloak area
- study/office, overlooking the back garden; this is externally accessible via a separate front door, providing independence from the main house
- two downstairs washrooms/toilets
- main bedroom with en suite bathroom
- three further bedrooms
- family bathroom
- oil-fired heating
- photo-voltaic solar panels.

The property has a single garage and parking in the drive for at least three cars.



# ROLE DESCRIPTION

This Role Description should be read in conjunction with the vision, aims and priorities set out in this profile. The role is for a priest who will lead, support and nurture the inhabitants of these diverse parishes and build on recent achievements to develop the mission of the Church in the community and ensure pastoral needs are met. It is for an experienced leader who will carry significant oversight and strategic development responsibilities. As our Rector we are seeking someone who:

## Spirituality

- Follows an ordered personal, spiritual life of daily prayer and Bible study and shares the fruits of their own discipleship with others.
- Seeks to follow the model given us by Jesus Christ of active ministry and time out for reflection and prayer in quiet days and retreats.
- Is led by the Holy Spirit and seeks to be continually filled with the spirit.

## Worship and Preaching

- Is comfortable leading and participating in the current diversity of our parish services, enriching and developing them to introduce new ideas.
- Supports and encourages the ministry of lay people in leading services.
- In preaching and other communication, presents and interprets the Christian message in relevant and inspiring ways that encourage us to live and witness as Christians in the 21st century.

## Leadership and Collaboration

- Is a servant leader and proven team player, committed to working collaboratively with the Associate Priest and the various teams in the parish, and can lead or be a team member, as appropriate.
- Is an effective delegator and decision maker, able to manage their workload and capable under pressure.
- Is a capable chair of meetings who will ensure that voices are heard and valued and also clear decisions are reached and implemented.

## Discipleship, Learning and Nurture

- Is open and creative in their approach to Christian discipleship and spiritual growth, strongly committed to seeing God's people grow and mature in faith and use their gifts in God's service.



- Will actively encourage our home and other groups.
- Is prepared to lead or co-lead discipleship, nurture courses and is committed to the growth of small groups, including introducing non church members to faith in an informal setting which allows questions and discussions.
- Is able to encourage and grow work with families and children.

#### **Evangelism and engagement with social justice**

- Is proactive and persuasive in sharing their faith with others and can enable others to gain confidence to do the same.
- Understands the imperative and breadth of parish outreach and mission, and will work and encourage others in mission, fair trade and outreach activities.
- Is experienced in working with schools and is committed to further develop our relationships with local schools and with young people beyond schools.

#### **Pastoral Care**

- Is approachable and sensitive to varied pastoral needs of our church family and wider community and willing to share pastoral care with our ministry team.

#### **Stewardship and Parish Organisation**

- Exhibits and proactively encourages generosity in the discipleship of church members, in the giving of their time, talents and money.
- Brings and displays the proven ability to plan, organise, manage, chair meetings and communicate effectively with the ministry team, churchwardens and Benefice Coordinator.

#### **Ecumenism and Links with other bodies**

- Is committed to working with local churches and encouraging others to do so.
- Actively encourages the support of our mission partners.
- Plays an active part in Deanery (through chapter and synod) and Diocesan life.

The role description should always be read in conjunction with the [Guidelines for the Professional Conduct of the Clergy](#).



#### **HOW TO APPLY**

A full application pack, along with Terms & Conditions, is available from the Diocesan website, [here](#).

For an informal conversation about vacancies in the Winchester Archdeaconry please contact:

The Right Reverend David Williams (*pictured above*)  
 Bishop of Basingstoke 07889 547095  
[bishop.david@winchester.anglican.org](mailto:bishop.david@winchester.anglican.org)

Jane Hammond  
 Clergy Appointments Assistant  
[clergy.appointments@winchester.anglican.org](mailto:clergy.appointments@winchester.anglican.org)

# Appendix

## Our churches

### ST MICHAEL & ALL ANGELS, HIGHCLERE (Population 1700, electoral roll 84)



The parish of Highclere is a diverse community. [Highclere Castle](#) (aka 'Downton Abbey') and its working estate take up part of the parish. The area of Penwood contains three housing estates; one private and two former council estates, and a small shop is located here. The centre of the parish borders on Woolton Hill and includes the busy [Village Hall](#), the popular [Red House](#) pub and [Thorngrove](#) Preparatory School. For primary education the parish is in the catchment area of the infant and junior schools located in Woolton Hill and some children attend St Martin's School, East Woodhay (see *St Thomas' and St Martin's sections below*).

Highclere is a great place to live, with a strong community spirit in a beautiful rural environment but close to Newbury. Local clubs and societies include: [St Michael's Ladies](#), [Highclere Society](#) (which aims to maintain and improve the quality of life in the village), [Evergreens](#) (a friendship group) and a poetry group. The monthly parish magazine, serving the three parishes of Highclere, Ashmansworth and Crux Easton, is widely distributed.

The biggest event in the village is the [annual church fête](#) held on the second Saturday in June. This is always well attended, a joyful community event and major fund raiser.

The Parish Church of St Michael & All Angels' is by Sir George Gilbert Scott, dates from 1870 but contains many much earlier treasures dating from Tudor times. There are strong historic links to Highclere Castle, formerly (inter alia) a palace of the Bishops of Winchester, near to which the earlier church building was located, with its churchyard still open and a neighbouring cemetery chapel. Today's church stands between the Castle and the village.



**ST THOMAS THE APOSTLE, WOOLTON HILL** (Population 1950, electoral roll 71)



[Woolton Hill](#) is a large rural village in the civic parish of [East Woodhay](#). The village has a [Post Office / Shop](#), [pub](#), [Sports Club](#) and a [Doctors' Surgery](#).

The Parish Church of St Thomas the Apostle is in the centre of the village. Consecrated in 1849, the church is a grade II listed building with a seating capacity of around 185. Major improvements to the building's environmental performance have been made recently.



We hold weekly services and have a regular choir. We hold an All Together Service once a month, where the congregation spans the ages of 0 to 95! This gathering has such potential for growth and is exploring different ways of presenting God's word and making our worship more engaging. There is a

sense of openness and flexibility and a keen desire to keep moving forwards and see God's family grow. There are currently two home groups and we hold a monthly mid-week prayer meeting. On Friday morning there is a [Community Café](#) in the church. We have an accomplished group of [handbell ringers](#) who play at special services.

The [Church Hall](#) is almost adjacent to the church and is run as a thriving community facility and an important aspect of the outward ministry of the church. Currently the local [Pre-school with Breakfast Club](#) is there five days a week and many other local groups including [Gardeners Club](#) and a young peoples' Theatre Group. Other interest groups held elsewhere in the village include Women in Touch; and the [East Woodhay Society](#) arranges several social events during the year.



The [Federated Schools of Woolton Hill](#) comprises St Thomas' C of E Infant School and Woolton Hill Junior School. School festival services are held in church and school groups regularly make educational visits to the church and churchyard.

**ST MARTIN OF TOURS, EAST WOODHAY** (Population 1000, electoral roll 64)



The parish comprises the community of East Woodhay surrounding the church, the hamlets of East End, Gore End, Heath End, North End, Ball Hill and Hatt Common. Despite the geographic spread there is a strong sense of community, supported by a [Village Hall](#) and the [Furze Bush Inn](#).

The Parish Church of St Martin of Tours is at the foot of the North Wessex Downs, an idyllic rural and peaceful setting - demonstrated by the many comments in the visitors' book, such as: *"most beautiful church I have seen"*; *"lovely church, beautifully kept"*, *"nice to see an open, well cared for church"*, *"lovely area and a lovely church too"*. It is late Georgian, having been rebuilt in 1823, and can seat more than 220 people. There is a choir and a team of bell ringers.

Excellent acoustics mean that it is a popular venue for concerts and for choirs, ensembles and soloists to record classical music.

The church has strong links with [St Martin's C of E VA Primary School](#). The Rector and Churchwardens are trustees, and the Headteacher serves on the PCC. Some school services are held in church and the children take an active part in the Christmas Carol and Mothering Sunday Services.

East Woodhay is a thriving and active community. Examples include:

- the monthly magazine, [Spectrum](#), published in collaboration with the Woolton Hill community
- the popular annual [St Martin's Guild Fête](#), held on the late Spring Bank Holiday, providing enjoyment for all ages and raising funds to maintain the church building and for other local charities
- The annual [East Woodhay Flower Show](#) showcasing local talent and produce
- [East Woodhay Silver Band](#), a highly accomplished band which plays at events throughout the year
- [East Woodhay Cricket Club](#)
- [East Woodhay Twinning Association](#), organising trips to Normandy villages and hosting those who visit from France.





**ST JAMES THE GREAT, ASHMANSWORTH** (Population 220, electoral roll 36)



The Parish Church of St James the Great is located towards the southern end of the village. The chancel is thought to have been part of a former Saxon Church while the nave dates from the early 12<sup>th</sup> century. Listed Grade 1, and without Victorian refurbishment, it is particularly known for its commemoration of English music, wall paintings and association with the composer Gerald Finzi who lived locally.

The church's inclusion in Simon Jenkins' 'England's Thousand Best Churches' contributes to a steady flow of visitors from the UK and overseas. Visitors have come from as far as Denmark, Switzerland, Netherlands, Turkey, Australia and the United States. Comments include: *"Thank you, Simon Jenkins, for sending me to this church"*; *"A beautiful church full of history"*; *"A church that makes you feel the music"*; *"Such a lovely country church; I will return"*.

The [Ashmansworth parish](#) is located on the North Hampshire Downs. The village is a popular start point for walkers over its many footpaths and The Wayfarer's Walk. Village life is vibrant and centres around the church and [Village Hall](#). In recent years a number of young families have moved into the village; and the church has begun activities and worship inspired by an active and well attended [Messy Church](#).



**ST MICHAEL & ALL ANGELS, CRUX EASTON** (Population 60, electoral roll 14)

The small hamlet of Crux Easton is set along a cul-de-sac bordering The Wayfarer's Walk in beautiful, open and sweeping countryside. Traces of habitation go back to Roman times and records of ownership of the hamlet exist from the time of Edward the Confessor onwards. The hamlet comprises some 24 houses and farming traditions are strong. It is a remote location with no shop, pub or school (the latter was closed in 1945).

Crux Easton House, formerly The Rectory, has had some interesting residents among whom was Geoffrey de Havilland, son of the then Rector. He was famous as an aircraft engineer and inventor, and his (and one of England's) earliest powered flight was from nearby Seven Barrow Down in 1910.

The church is regarded as a small Georgian gem. It is situated at the south-western end of the hamlet. The existence of a church is recorded in The Domesday Book. The present church was built in 1775, there was a major restoration in 1894 and again in 1993 which included the installation of a Georgian style east window.



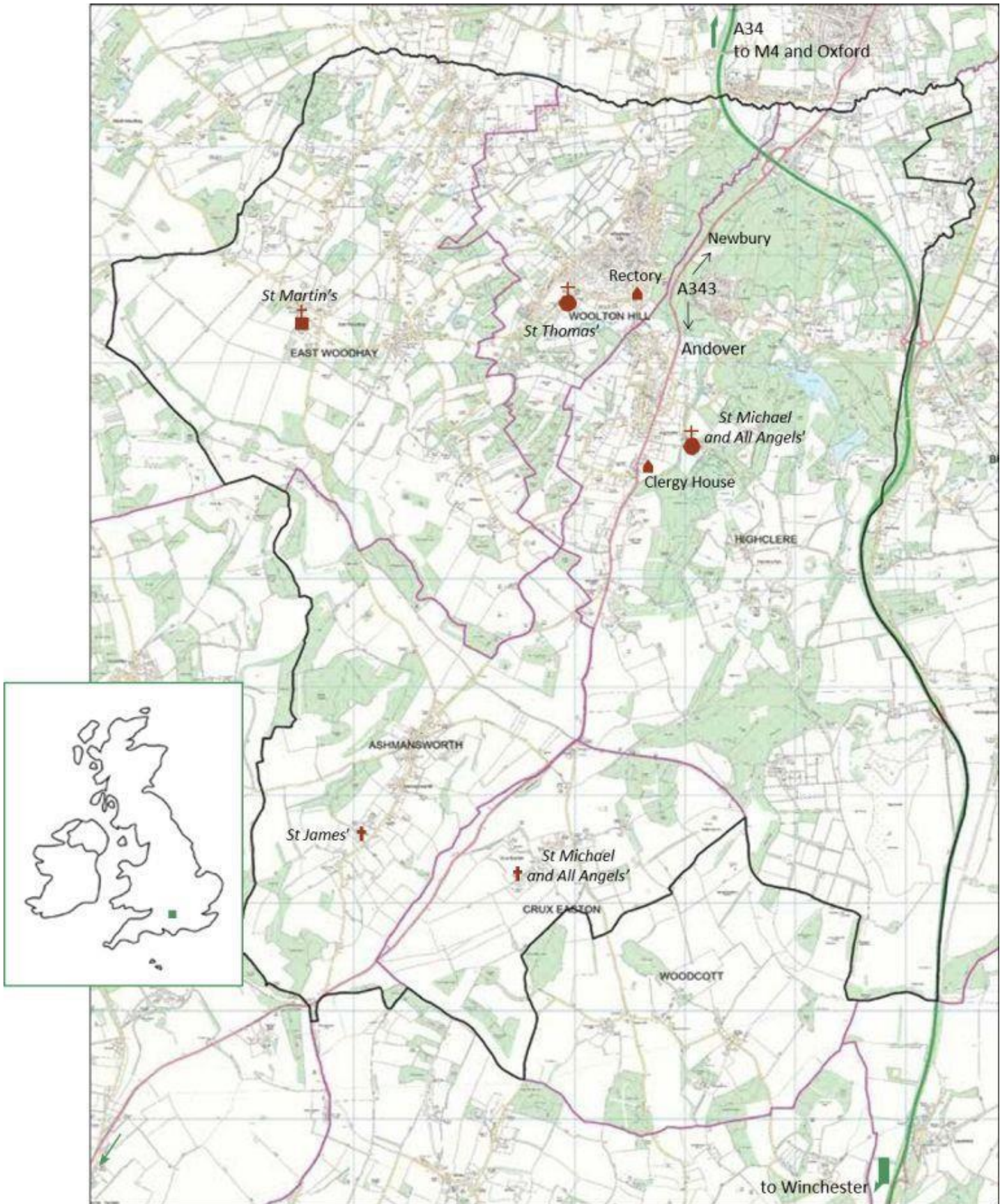
## Monthly Pattern of Services (November 2023)

1 <sup>st</sup> Sunday	2 <sup>nd</sup> Sunday	3 <sup>rd</sup> Sunday	4 <sup>th</sup> Sunday	5 <sup>th</sup> Sunday & August Sundays
	8.00am <b>Holy Communion</b> (BCP) <b>East Woodhay</b>		8.00am <b>Holy Communion</b> (BCP) <b>Highclere</b>	
9.30am <b>All Together</b> <i>(a service for all ages with Sunday Club activities following)</i> <b>Woolton Hill</b>	9.30am <b>Parish Communion</b> <b>Woolton Hill</b>	9.30am <b>Morning Worship</b> <b>Woolton Hill</b>  9.30am <b>Holy Communion</b> (BCP) <b>Ashmansworth</b>	9.30am <b>Parish Communion</b> <b>Woolton Hill</b>  9.30am <b>Morning Worship</b> <b>East Woodhay</b>	<b>10.00am</b> <b>Benefice Communion</b> <i>(5<sup>th</sup> Sundays, host church may vary)</i> <i>(throughout August this service rotates around all our churches)</i>  <b>12noon Baptism</b> <i>(any church)</i>  <i>Sunday after Christmas</i> <b>10.00am</b> <b>Benefice Communion</b> <b>East Woodhay</b>
11.00am <b>Matins</b> (BCP) <b>Highclere</b>  11.00am <b>Parish Communion</b> <b>East Woodhay</b>	11.00am <b>Matins</b> (BCP) <b>Highclere</b>	11.00am <b>Parish Communion</b> <b>Highclere</b>	<b>12noon Baptism</b> <i>(any church)</i>	
6.00pm <b>Evensong</b> (BCP) <b>Ashmansworth</b>  <i>September only: 6.00pm</i> <b>Highclere Cemetery Chapel Service</b>		6.00pm <b>Evensong</b> (BCP) <b>East Woodhay</b>	6.00pm <i>(5.00pm October – March)</i> <b>Evensong</b> (BCP) <b>Crux Easton</b>	

First Wednesday in each month: 10.00am **Holy Communion** **Woolton Hill**

BCP = Book of Common Prayer

# Benefice Map



'From his fullness we have all received, grace upon grace.'  
John 1:16

Diocesan Office, Wolvesey, Winchester SO23 9ND

t: 01962 737310 [www.winchester.anglican.org](http://www.winchester.anglican.org)



@CofEWinchester



[www.facebook.com/CofEWinchester](https://www.facebook.com/CofEWinchester)